

Know Your Area

South East Cornwall

Community Area Partnership
2023



Know Your Area – using the evidence

This pack:

- Provides headline findings from a **review of key documents**
 - CAP Area Insights Profile
 - Town Economic Vitality Index
 - Primary Care Network Profile
 - Safer Towns Profiles
- Highlights **specific area differences** from the Cornwall profile, where the CAP could consider prioritising their actions
- Calls out areas of **greatest need and demand** (people and place)

To find out more:

- Use the **Insights profiles for smaller geographies** (such as towns and parishes) to drill down into more detail
- Explore other sources of **insight and intelligence** to help build the picture

Area Information



67,703 people live in South East Cornwall [1]



41% of people live in the largest towns of Liskeard and Saltash; 31% live in rural areas [2]



16% of people are aged 0-15 years, 57% are 16-64 years, 28% are in the 65+ age group [3]



95% in the area identify as White British [4a] including **3,300 people (5%) who identify specifically as Cornish** [4b]



Largest Industry and Employment Sector is Retail followed by Health. The largest Business Sector is Agriculture [5]

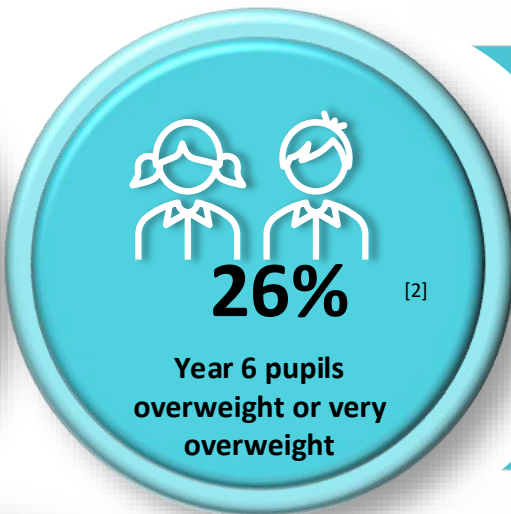
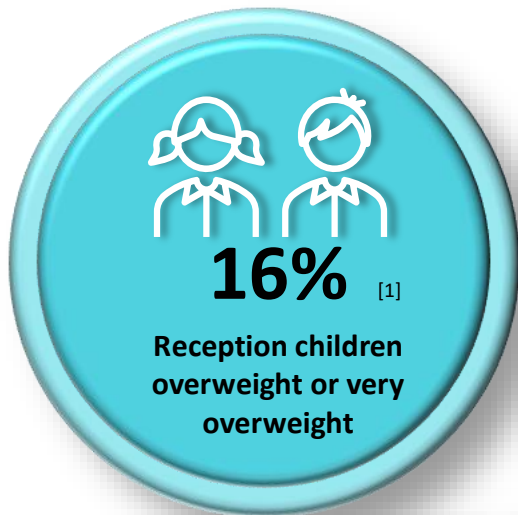
Strengths

- **Active and engaged** community
- Low **fuel poverty**
- Areas of **low unemployment**
- **Low levels of deprivation** outside Liskeard

Challenges

- **Higher Dependency Ratio** – higher % of older people, less working age
- Low **population growth**
- Comparatively **high** levels of **obesity**
- **Geographical barriers** to accessing services; rural isolation
- **Multiple deprivation** in Liskeard
- **Personal debt** above Cornwall average

Health Inequalities and Deprivation



16% of children in this area are in **absolute low income families** vs 13% across Cornwall; in **Liskeard this rises to 20%** ^{[3a] [3b]}
41% of people in **Liskeard** live in the **most deprived 20% areas of England** ^[4] The wider area experiences geographical **barriers to accessing services 31%** and more rural isolation ^[5]

2nd Highest PCN For Free School Meals



Long term conditions – All ages



Condition	PCN %
Obesity	11.1
Diabetes	8.1
Asthma	7.6
CHD	4.3
Cancer	4.2
CKD	3.3
COPD	3.0
Stroke	2.7
Dementia	0.9
Mental Health	0.9
LD	0.4

[6]

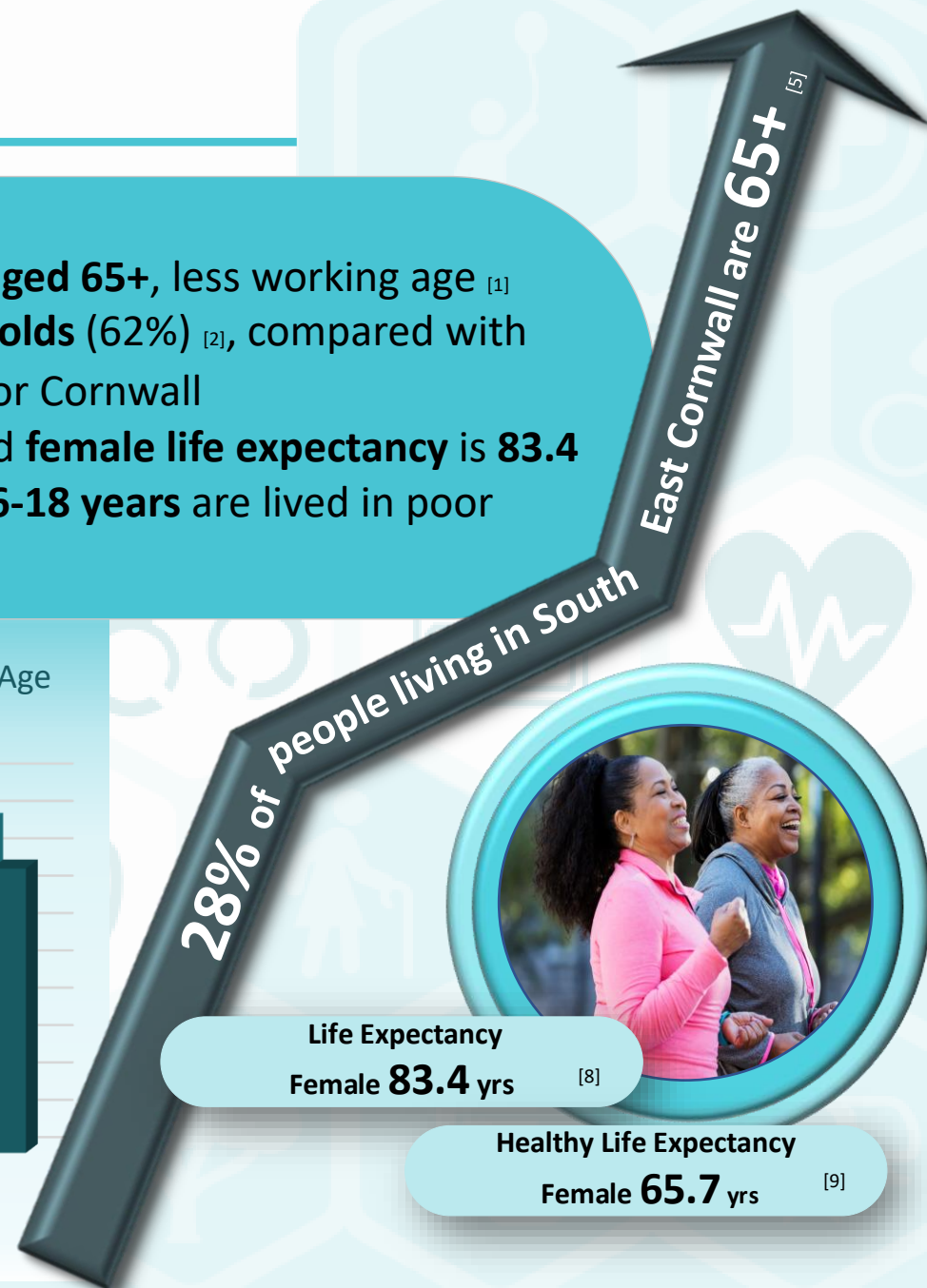
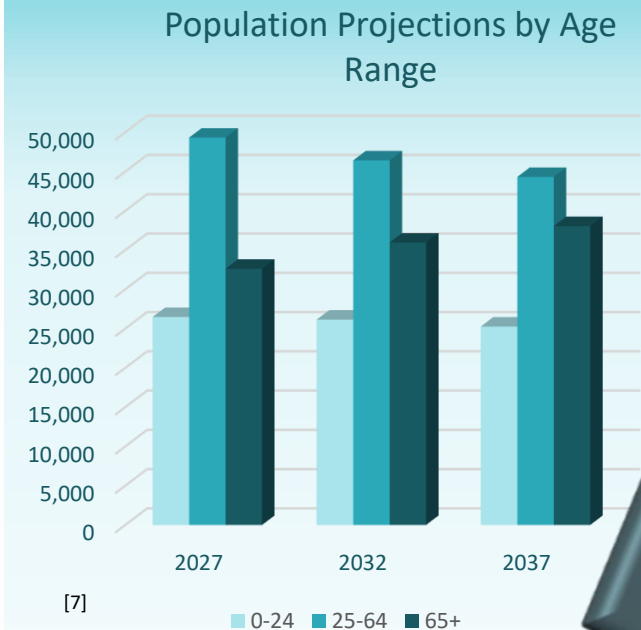
[7]

Aging Population



- High **dependency ratio** – higher percentage **aged 65+**, less working age [1]
- Liskeard has the most **one-pensioner households** (62%) [2], compared with **54%** across the whole CAP area [3] and **56%** for Cornwall
- Average **male life expectancy** is **80.2** years and **female life expectancy** is **83.4** (Cornwall M 79.7 and F 83.8 years). Around **16-18 years** are lived in poor health.[4]

East Cornwall PCN has the **highest number of Adult Social Care packages** in Cornwall - with demand and complexity due to increase in line with ageing population [6]



Life Expectancy
Female **83.4** yrs [8]

Healthy Life Expectancy
Female **65.7** yrs [9]

Crime and Vulnerable Localities

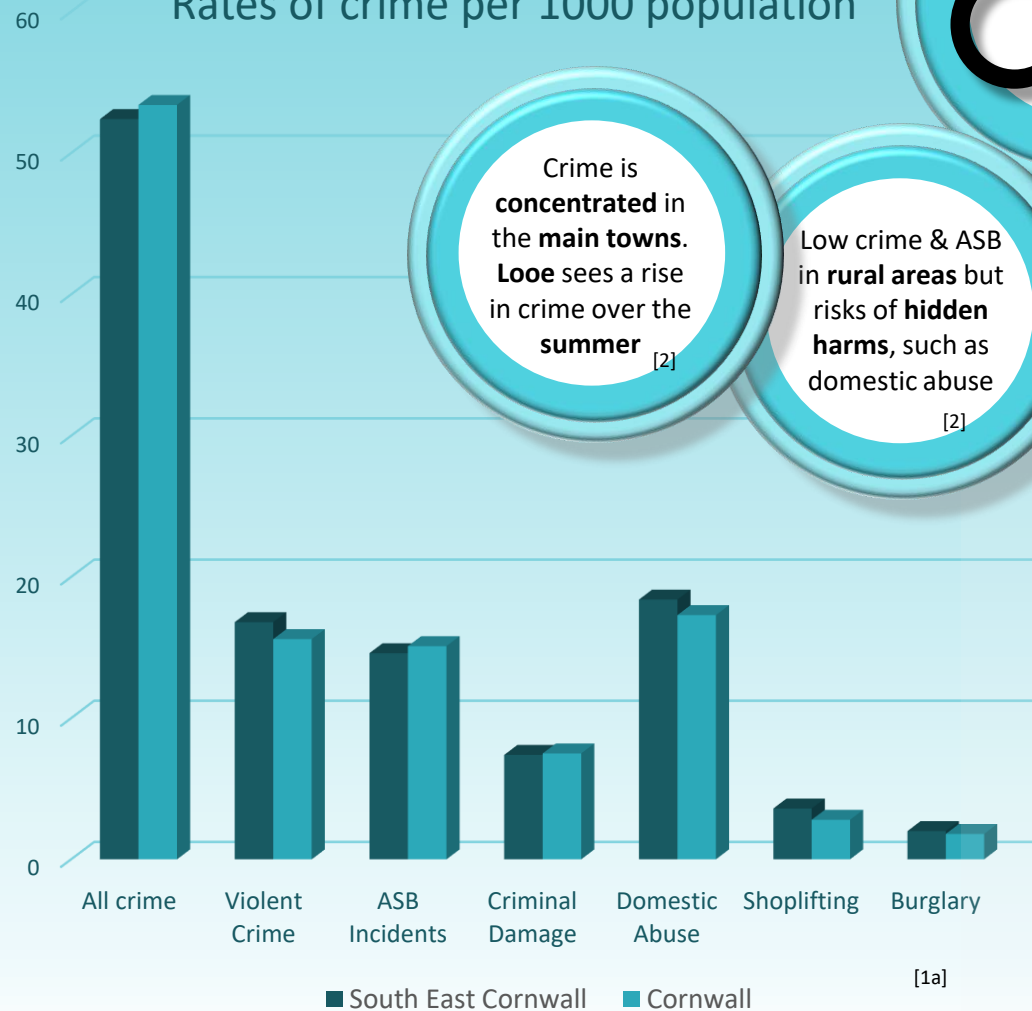
Police are transitioning to a new data system so the latest data relates to the 12 months to October 2022. This will be updated in Autumn 2023.



Volumes - All Crime 3459

Domestic Abuse 1,215 Criminal Damage 490
 Violent Crime 1,110 Shoplifting 237
 Anti-social behaviour 965 Burglary 131 ^[1b]

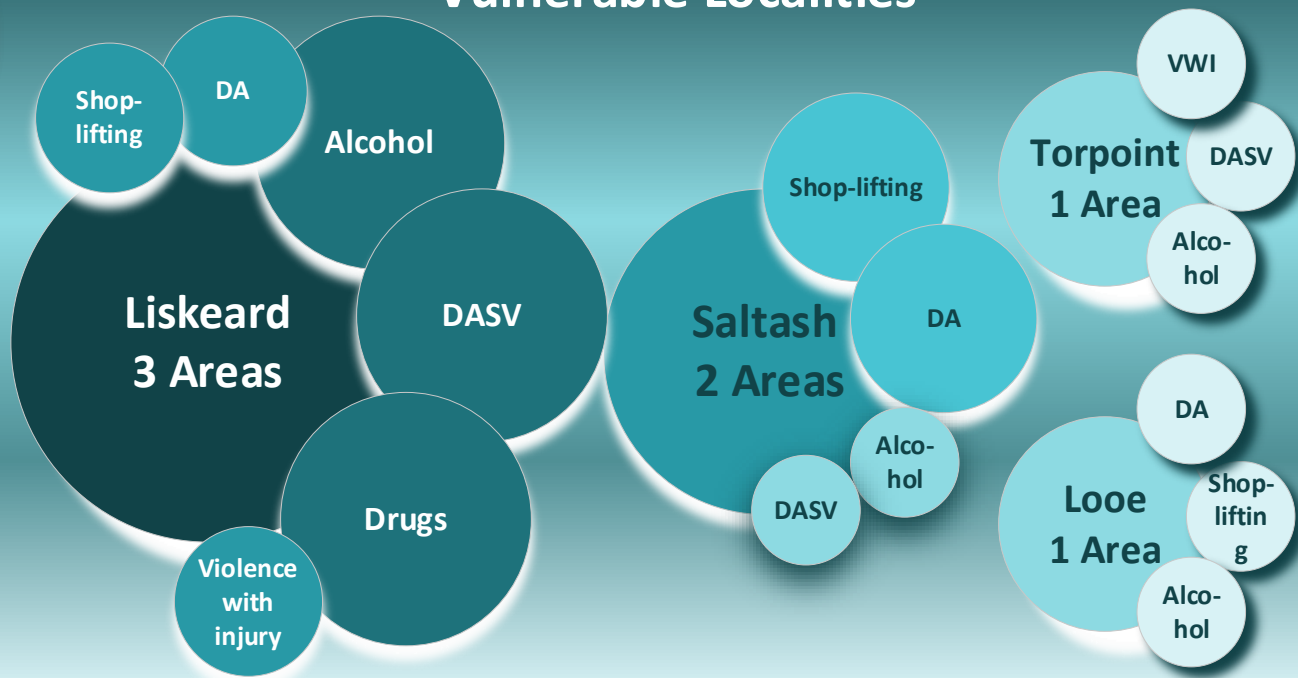
Rates of crime per 1000 population



Crime is **concentrated** in the **main towns**. **Looe** sees a rise in crime over the **summer** ^[2]

Low crime & ASB in **rural areas** but risks of **hidden harms**, such as domestic abuse ^[2]

Vulnerable Localities



DA – Police Reported Domestic Abuse, DASV – engaged in Domestic Abuse Services, VWI – Violence with Injury

[3]

Source Documents

Area Information

- [1][3][4a][5] Local insight profile for 'Liskeard, Looe and Cornwall Gateway' [Local Insight \(communityinsight.org\)](https://communityinsight.org)
- [2] Office for National Statistics 2011 rural-urban classification; best fit to Census 2021 LSOAs
- [3] Census 2021 Ethnic group (detailed) at MSOA; best fit to Census 2021 LSOAs (pending LSOA data release)

Health Inequalities and Deprivation

- [1][2][6][7] East Cornwall PCN Profile [Community and health based profiles - Cornwall Council](https://communityinsight.org)
- [3a][5] Local insight profile for 'Liskeard, Looe and Cornwall Gateway' [Local Insight \(communityinsight.org\)](https://communityinsight.org)
- [3b][4] Local insight profile for 'Liskeard' [Local Insight \(communityinsight.org\)](https://communityinsight.org)

Aging Population

- [1][3] Local insight profile for 'Liskeard, Looe and Cornwall Gateway' [Local Insight \(communityinsight.org\)](https://communityinsight.org)
- [2] Local insight profile for 'Liskeard' [Local Insight \(communityinsight.org\)](https://communityinsight.org)
- [4][6][7]*[8][9] East Cornwall PCN Profile [Community and health based profiles - Cornwall Council](https://communityinsight.org)

* Note: projections have not been updated for the 2021 PCN areas so East Cornwall and Launceston and Tamar Valley PCNs are identical and cover the old East Cornwall PCN area.

Crime Data

- [1a][1b][2] Police recorded crime and incident data – on request from Amethyst
- [3] Vulnerabilities Index – on request from Amethyst